



SDTaigang

山东太钢国际贸易有限公司

Shandong Taigang International Trade Co., Ltd

电话/Tel: +86-0531-55581008

传真/Fax: +86-0531-55581008

网址/Website: <https://taiganggroup.en.alibaba.com>

邮箱/Email: taigang@taigangsteel.com

地址: 山东省济南市高新区经十路2000号舜泰广场2号楼912室

Address: Room 912, Shuntai Square Plaza, Gaoxin District, Jinan, Shandong, China

Enterprise Brochure
企业宣传册

——诚信/开拓/创新/服务/求真/务实——
Integrity / development / innovation / service / truth-seeking / pragmatic



公司介绍

Company introduction

山东太钢国际贸易有限公司位于中国山东济南一美丽的泉城。东邻青岛港口，北临天津地处京津冀经济产业带，交通便利，物流发达。公司自成立以来秉承集团“诚实守信，合作共赢”的经营理念，“严禁细致，认真负责”的工作态度，实现了各项业务的稳健快速成长。我司先后成为太钢、张浦、酒钢、联众、诚德、等钢厂的一级代理商。并与各大钢厂保持着长期良好稳定的合作关系。从而保证了我公司充足的货源，齐全的品种，优势的价格，使我在激烈的市场竞争中赢得了众多客户。

公司下设进出口代理部、储运部、车队，实行从签约到出运一体化运作的模式开展专业进出口代理业务。公司库存1万余吨，公司备有专业物流，为您提供：看货、订货、送货等一条龙服务。主要经营不锈钢卷板/不锈钢型材/不锈钢管材及配件等，现常年库存周转量7500吨以上，涉及不同品种800余种规格。年销量售额过千万元。所售产品均执行国家标准，适用于工程、煤矿、纺织、电力、锅炉、机械、军工等各个领域。公司以良好的信誉、优质的产品、雄厚的实力、低廉的价格服务于广大用户。谨向对公司一贯给予关怀、支持和帮助的新老朋友和广大客户表示衷心的感谢！并真诚希望与之建立长期稳定的合作关系，互惠互利，共求发展。

我们始终坚持以市场为导向，不断壮大企业规模，提升企业核心竞争能力，力图在最短时间内，创造最优秀的品牌，提供最满意的服务。公司经理携全体员工恭候各地新老宾客光临我司实地考察、指导工作

Shandong Taigang International Trade Co., Ltd. is located in Jinan, Shandong Province, China - a beautiful spring city. Qingdao port to the East, Tianjin to the north is located in the economic and industrial belt of Beijing, Tianjin and Hebei, with convenient transportation and developed logistics. Since its establishment, the company has been adhering to the group's business philosophy of "honest and trustworthy, win-win cooperation" and the working attitude of "no meticulous, serious and responsible" to achieve the steady and rapid growth of various businesses. Our company has become a first-class agent of steel plants such as Taigang, Zhangpu, Jiugang, Lianzhong, Chengde, etc. And with the major steelworks to maintain a long-term good and stable relations of cooperation. Thus, we can ensure that our company has sufficient supply, complete varieties and superior price, which makes our company win many customers in the fierce market competition.

The company consists of import and export agency department, storage and transportation department, and fleet, and carries out professional import and export agency business in the mode of integrated operation from contract signing to shipment. The company's inventory is more than 10000 tons, and the company has professional logistics to provide you with one-stop services, such as looking at goods, ordering and delivering goods. Mainly engaged in stainless steel rolling plate / stainless steel profiles / stainless steel pipes and accessories, etc., now the annual inventory turnover is more than 7500 tons, involving more than 800 specifications of different varieties. The annual sales volume is over ten million yuan. The products are sold in accordance with national standards, applicable to engineering, coal mine, textile, power, boiler, machinery, military and other fields. Company with good reputation, high-quality products, strong strength, low prices to serve the majority of users. I would like to express my heartfelt thanks to the new and old friends and customers who have always given us care, support and help! And sincerely hope to establish a long-term and stable cooperative relationship with it, mutual benefit and common development.

We always adhere to the market-oriented, constantly expand the scale of the enterprise, improve the core competitiveness of the enterprise, and strive to create the best stainless steel brand and provide the most satisfactory service in the shortest time. The company manager and all staff are looking forward to new and old guests from all over the world to visit our company and guide our work.

办公场景

Office scene

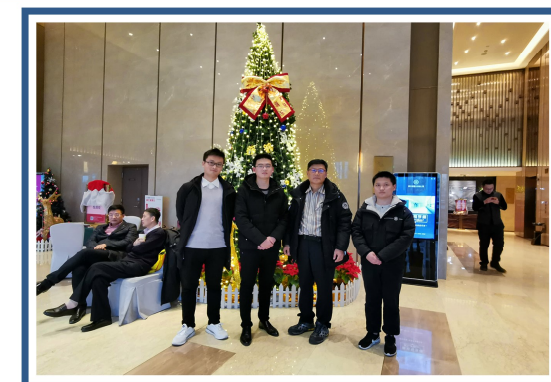


仓库加工

Warehouse processing

到访客户

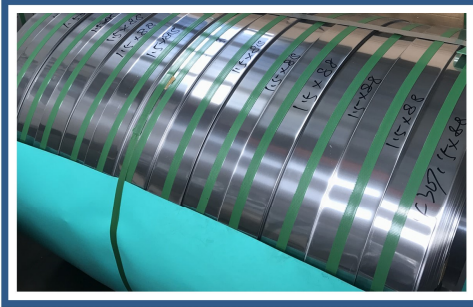
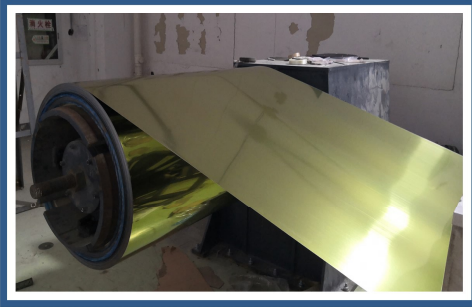
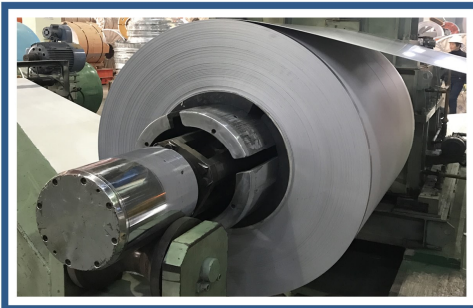
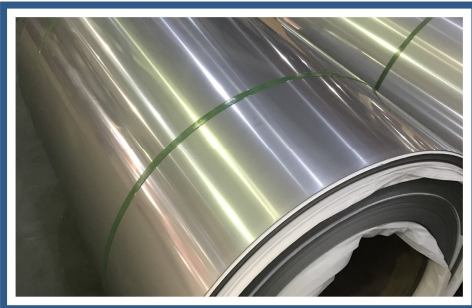
Visiting customers



产品展示

Warehouse processing

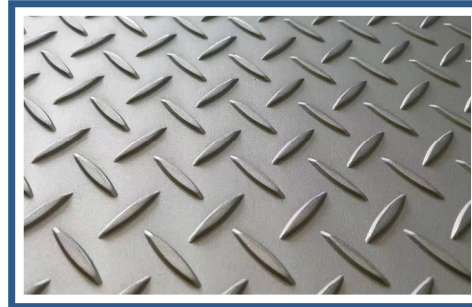
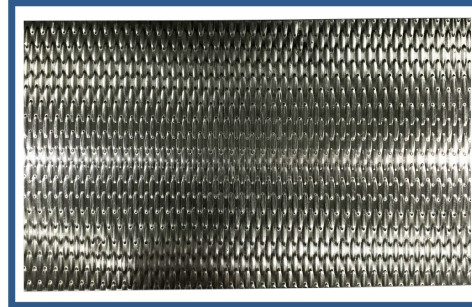
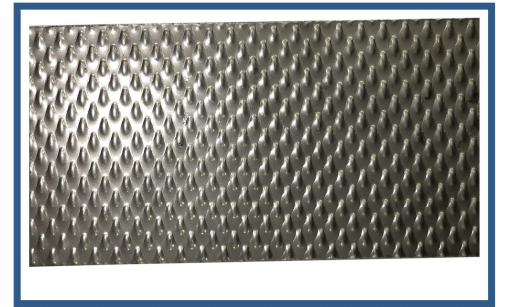
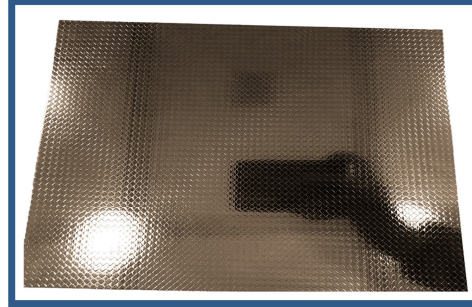
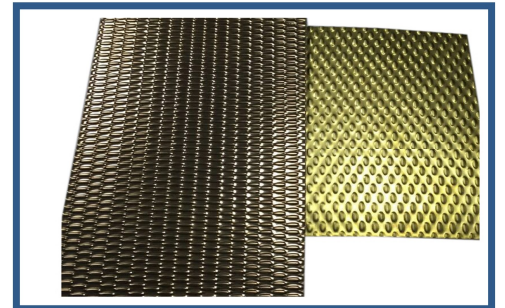
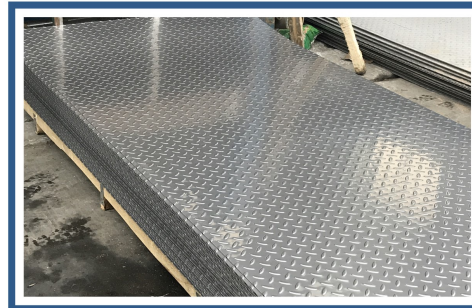
卷板加工/Coil processing



产品展示

Warehouse processing

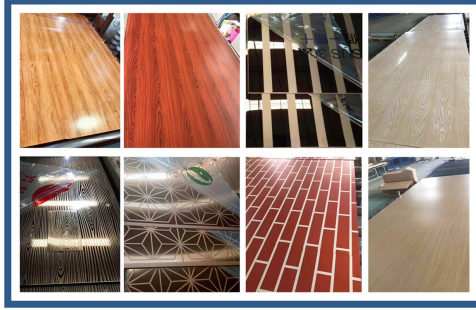
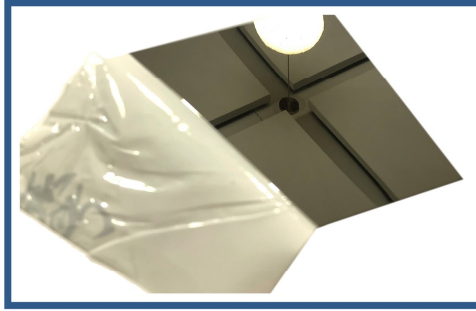
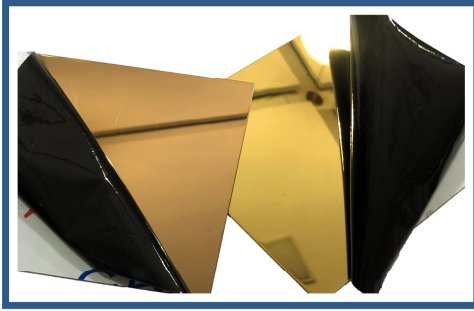
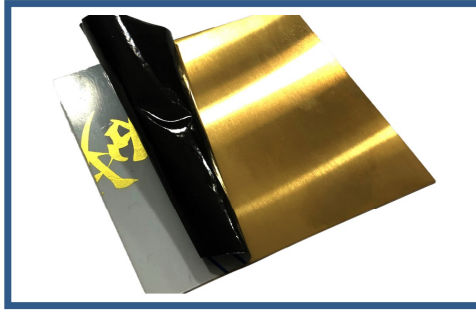
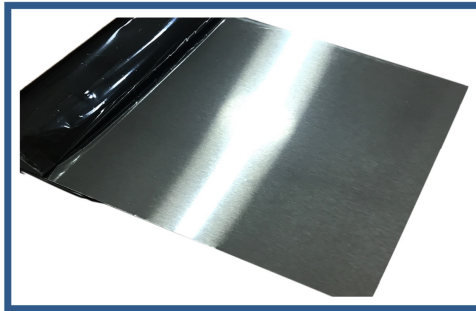
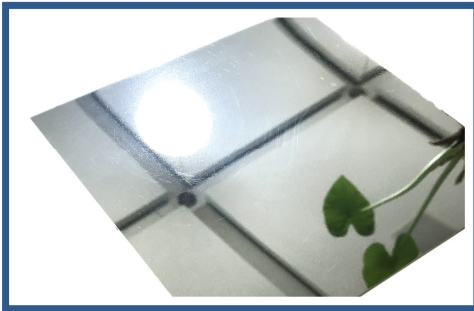
压花板/Matrix for embossing



产品展示

Warehouse processing

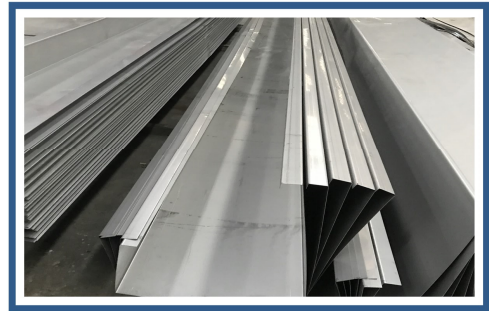
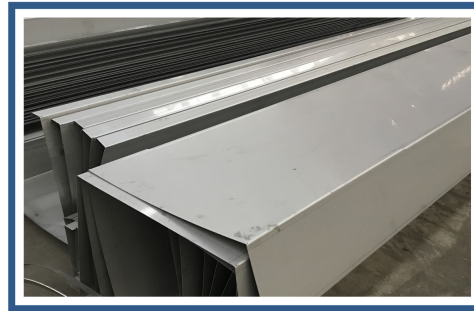
表面处理/Surface treatment



产品展示

Warehouse processing

激光剪切/Laser shearing



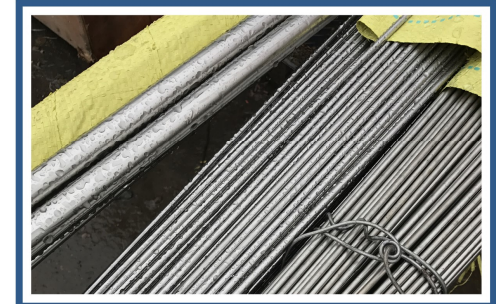
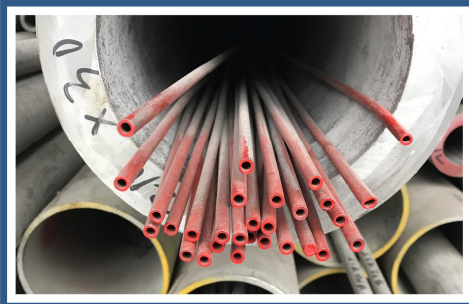
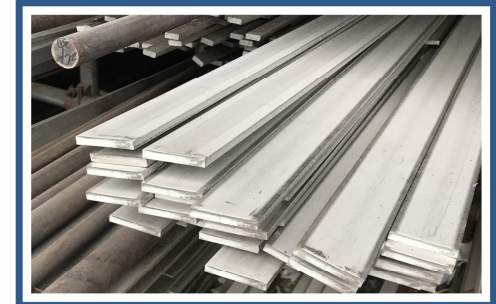
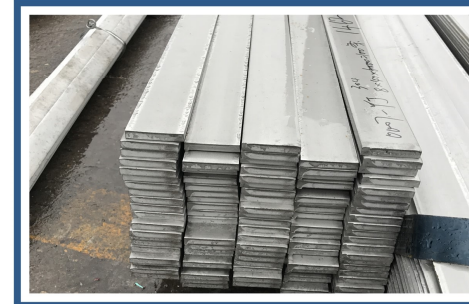
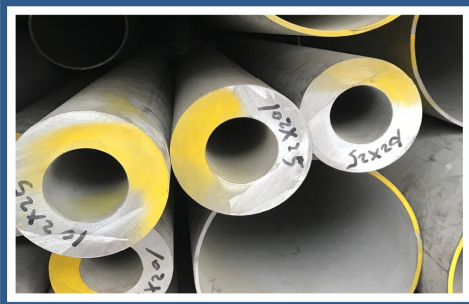
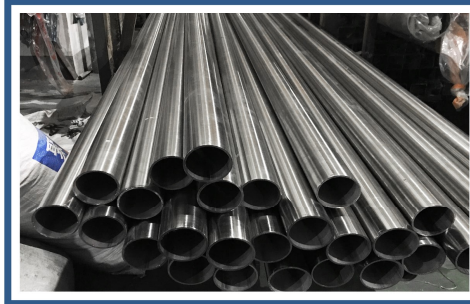
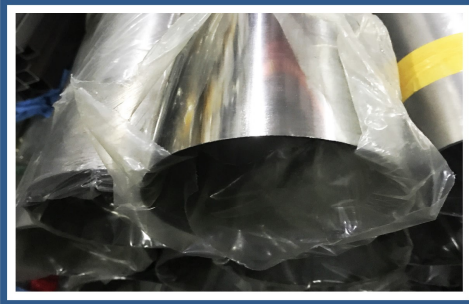
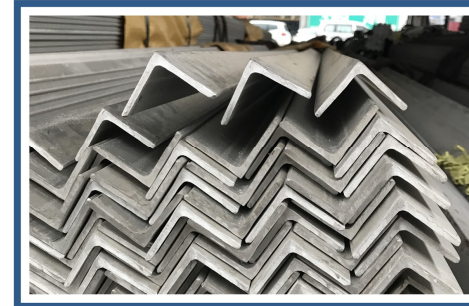
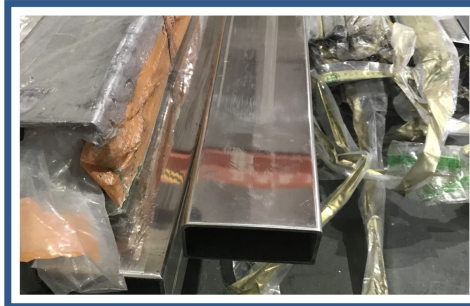
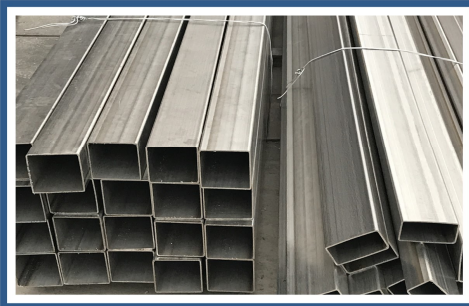
产品展示

Warehouse processing

产品展示

管材/Pipe

不锈钢型材/Stainless steel profile



产品展示

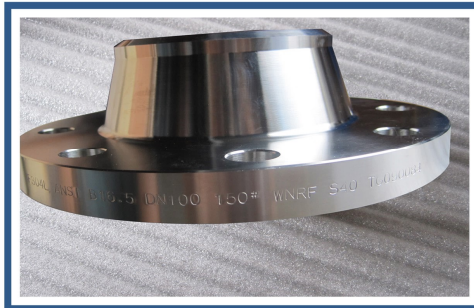
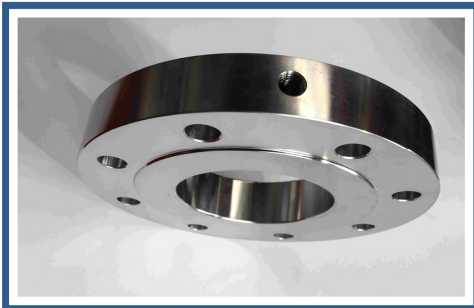
Warehouse processing

资质证书

Qualification certificate

资质证书/Qualification certificate

配件/Parts





产品规格

Product specification

槽钢/Channel

型号 Type	尺寸 Size (mm)			理论重量 weight (kg/m)	型号 Type	尺寸 Size (mm)			理论重量 weight (kg/m)
	H (高度) Height	B (宽度) Breadth	D (厚度) Thickness			H (高度) Height	B (宽度) Breadth	D (厚度) Thickness	
槽钢 (Channel) GB 707-88					槽钢 (Channel) GB 707-88				
5	50	37	4.5	5.438	32a	320	88	8	38.083
6.3	63	40	4.8	6.634	32b	320	90	10	43.107
6.5*	65	40	4.8	6.709	32c	320	92	12	48.121
8	80	43	5	8.045	36a	360	96	9	47.814
10	100	48	5.3	10.007	36b	360	98	11	53.466
12*	120	53	5.5	12.059	36c	360	100	13	59.118
12.5	125	5	5.5	12.318	40a	400	100	10.5	58.928
14a	140	58	6	14.535	40b	400	102	12.5	65.208
14b	140	60	8	16.733	40c	400	104	14.5	71.488
16a	160	63	6.5	17.24	轻型槽钢 (Light channel steel) YB 164-63				
16	160	65	8.5	19.752	16	160	64	5	14.2
18a	180	68	7	20.174	16a	160	68	5	15.3
18	180	70	9	23	18	180	70	5.1	16.3
20a	200	73	7	22.637	18a	180	74	5.1	17.4
20	200	75	9	25.777	20	200	76	5.2	18.4
22a	220	77	7	24.999	20a	200	80	5.2	19.8
22	220	79	9	28.453	22	220	82	5.4	21
24a*	240	78	7	26.86	22a	220	87	5.4	22.6
24b*	240	80	9	30.628	24	240	90	5.6	24
24c*	240	82	11	34.396	24a	240	95	5.6	25.8
25a	250	78	7	27.41	27	270	95	6	27.7
25b	250	80	9	31.335	30	300	100	6.5	31.8
25c	250	82	11	35.26	33	330	105	7	36.5
27a*	270	82	7.5	30.838	36	360	110	7.5	41.9
27B*	270	84	9.5	35.077	40	400	115	8	48.3
27C*	270	86	11.5	39.316	32c	50	32	4.4	4.84
28a	280	82	7.5	31.427	36a	65	36	4.4	5.9
28b	280	84	9.5	35.823	36b	80	40	4.5	7.05
28c	280	86	11.5	40.219	36c	100	46	4.5	8.59
30a*	300	85	7.5	34.463	40a	120	52	4.8	10.4
30b*	300	87	9.5	39.173	40b	140	58	4.9	12.3
30c*	300	89	11.5	43.883	40c	140	62	4.9	13.3



产品规格

Product specification

工字钢/I-Beam

型号 Type	尺寸 Size (mm)			理论重量 weight (kg/m)	型号 Type	尺寸 Size (mm)			理论重量 weight (kg/m)
	H (高度) Height	B (宽度) Breadth	D (厚度) Thickness			H (高度) Height	B (宽度) Breadth	D (厚度) Thickness	
工字钢(I-beam) GB 707-88					工字钢(I-beam) GB 707-88				
10	100	68	4.5	11.261	32c	320	134	13.5	62.765
12*	120	7	5	13.987	36a	360	136	10	60.037
12.6	126	74	5	14.223	36b	360	138	12	65.689
14	240	80	5.5	16.89	36c	360	140	14	71.341
16	160	88	6	20.513	40a	400	142	10.5	67.598
18	180	94	6.5	24.143	40b	400	144	12.5	73.878
20a	200	100	7	27.929	40c	400	146	14.5	80.158
20b	200	102	9	31.069	45a	450	150	11.5	81.42
22a	220	110	7.5	33.07	45b	450	152	13.5	87.485
22b	220	112	9.5	36.524	45c	450	154	15.5	94.55
24a*	240	116	8	37.477	50a	500	158	12	93.654
24b*	240	118	10	41.245	50b	500	160	14	101.504
25a	250	116	8	38.105	50c	500	162	16	109.354
25b	250	118	10	42.03	55a	500	166	12.5	105.355
27a*	270	122	8.5	42.825	55b	550	168	14.5	113.97
27b*	270	124	10.5	47.084	55c	550	170	16.5	122.605
28a	280	122	8.5	43.492	56a	560	166	12.5	106.316
28b	280	124	10.5	47.888	56b	560	168	14.5	115.108
30a*	300	126	9	48.084	56c	560	170	16.5	123.9
30b*	300	128	11	52.794	63a	630	176	13	121.407
30c*	300	130	13	57.504	63b	630	178	15	131.298
32a	320	130	9.5	52.717	63c	630	180	17	141.189
32b	320	132	11.5	57.741					

产品规格

Product specification

H型钢/H section steel

规格型号 Specification type	国标重量 (kg/m) Weight	规格型号 Specification type	国标重量 (kg/m) Weight
100*50*5*7	9.54	250*125*6*9	29.7
100*100*6*8	17.2	250*250*9*14	72.4
125*60*6*8	13.3	250*255*14*14	82.2
125*1125*6.8*9	23.8	294*200*8*12	57.3
150*75*5*7	14.3	294*302*12*12	85
148*100*6*9	21.4	298*149*5.5*8	32.6
150*150*7*10	31.9	300*150*6.5*9	37.3
175*90*5*8	18.2	300*300*10*15	94.5
175*175*75*11	40.3	300*305*15*15	106
194*150*6*9	31.2	340*250*9*14	79.7
198*99*4.5*7	18.5	344*348*10*16	115
200*100*5.5*8	21.7	346*174*6*9	41.8
200*200*8*12	50.5	350*175*7*11	50
200*204*12*12	56.7	350*350*12*16	137
244*175*7*11	44.1	388*402*15*15	141
248*124*5*8	25.8	390*300*10*16	107

规格型号 Specification type	国标重量 (kg/m) Weight	规格型号 Specification type	国标重量 (kg/m) Weight
394*398*11*18	147	506*201*11*19	103
396*199*7*11	56.7	582*300*12*17	137
400*200*8*13	66	588*300*12*20	151
400*400*13*21	172	594*302*14*23	175
400*408*21*21	197	596*199*10*15	95.1
414*405*18*28	233	600*200*11*17	106
428*407*20*35	284	606*201*12*20	120
440*300*11*18	124	692*300*13*30	166
446*199*8*12	66.7	700*300*13*24	185
450*200*9*14	76.5	800*300*14*22	191
458*417*30*50	41.5	800*300*14*26	210
482*300*11*15	115	890*299*15*23	213
488*300*11*18	129	900*300*16*28	243
496*199*9*14	79.5	912*302*18*34	286
498*432*45*70	60.5		
500*200*10*16	89.6		

产品规格

Product specification

角钢/Angle steel

等边角钢理论重量表 Weight table of equilateral angle steel													
型号 Model	尺寸Size		理论重量 weight (kg/m)	型号 Model	尺寸Size		理论重量 weight (kg/m)	型号 Model	尺寸Size		理论重量 weight (kg/m)		
	B	D			B	D			B	D			
2	20	3	0.889	6.3	63	8	7.469	10	100	16	23.257		
		4	1.145			10	9.151			7	11.928		
2.5	25	3	1.124	7	70	4	4.372	11	110	8	13.532		
		4	1.459			5	5.697			10	16.69		
3	30	3	1.373			6	6.406			12	19.782		
		4	1.786	7.5	75	7	7.398	12.5	125	14	22.809		
3.6	36	3	1.656			8	8.373			8	15.504		
		4	2.163			5	5.818			10	19.133		
		5	2.654	8	80	6	6.905	14	140	12	22.696		
		2.5	2.306			7	7.976			14	26.193		
4	40	3	1.852			8	9.03			10	21.488		
		4	2.422	9	90	10	11.089	16	160	12	25.522		
		5	2.976			5	6.211			14	29.49		
4.5	45	3	2.088			6	7.376			16	33.393		
		4	2.736	10	100	7	8.526	18	180	10	24.729		
		5	3.369			8	9.658			12	29.391		
		6	3.985			10	11.874			14	33.987		
		3	2.332	11	110	6	8.35	20	200	16	38.518		
		4	3.059			7	9.656			12	33.159		
5	50	5	3.770			8	10.946			14	38.383		
		6	4.456	12	120	10	13.476	18	180	16	43.542		
		3				12	15.94			18	48.634		
5.6	56	4	0.889			6	9.366			14	42.894		
		5	1.145	14	140	7	10.83	20	200	16	48.68		
		6				8	12.276			18	54.401		
		4	3.907			10	15.12			20	60.056		
6.3	63	5	4.822	16	160	12	17.898	24	240	24	71.168		
		6	5.721			14	20.611						

不等边角钢理论重量表 Weight table of unequal angle steel														
型号 Model	尺寸Size			理论重量 weight (kg/m)	型号 Model	尺寸Size			理论重量 weight (kg/m)	型号 Model	尺寸Size			理论重量 weight (kg/m)
	B	b	d			B	b	d			B	b	d	
2.5/1.6	25	16	3	0.912	7.5/5	75	50	5	4.808	11/7.0	110	70	8	10.946
			4	1.176				6	5.699				10	13.476
3.2/2	32	20	3	1.171	8.0/5	80	50	8	7.431	12.5/8	125	80	7	11.066
			4	1.522				10	9.098				8	12.551
4/2.5	40	25	3	1.484				9/5.6	90				56	5
			4	1.936	6	5.935	12			18.333				
4.5/28/3.0	45	28	3	1.687	10/6.3	100	63			7	6.848	16/10.0		160
			4	2.203				8	7.745	10	17.475			
		30	5	2.251				5	5.661	12	20.724			
5/3.2	50	32	3	1.908	11/7.0	110	70	6	6.717	18/11.0	180	110	14	23.908
			4	2.494				7	7.756				10	19.872
			3	2.153				8	8.779				12	23.592
5.6/3.6	56	36	4	2.818	12/8.0	120	80	6	7.55	20/12.5	200	125	14	27.247
			5	3.466				7	8.722				14	30.838
			4	3.185				8	9.878				10	22.273
			5	3.92	14/11.0	140	110	10	12.142	24/18.0	240	150	12	26.464
			6	4.638				6	8.35				14	30.589
			7	5.339				7	9.656				16	34.649
			4	3.57	16/12.5	160	125	8	10.946	28/20.0	280	175	12	29.761
			5	4.403				10	13.476				14	34.436
			6	5.218				6	8.35				16	39.045
			7	6.011	7	9.656	18	43.588						



产品规格

Product specification

无缝管规格表/Specification of seamless pipe/

外径*厚度 Outer diameter * wall thickness	外径*厚度 Outer diameter * wall thickness	外径*厚度 Outer diameter * wall thickness
10*2	42*5	89*12
12*2	42*6	108*4.5
14*3.5	42*8	108*5
14*4	45*3	108*6
16*3	45*4	108*7
18*2	45*5	108*8
18*3	45*6	108*9
18*4	45*7	108*10
18*5	48*4	108*12
19*2	48*4.5	108*14
21*4	48*5	108*15
22*2.5	48*6	108*16
22*3	48*7	108*20
22*4	48.3*12.5	114*5
22*5	51*3	114*6
25*2.5	51*3.5	114*7
25*3	51*4	114*8
25*4	51*5	114*8.5
25*5	51*6	114*9
25*5.5	57*4	114*10
27*3.5	57*5	114*11
27*4	57*5.5	114*12
27*5	57*6	114*13
27*5.5	60*4	114*14
28*2.5	60*4	114*16
28*3	60*5	114*18
28*3.5	60*6	133*5
28*4	60*7	133*6
30*2.5	60*8	133*7
32*2.5	60*9	133*8
32*3	60*10	133*10
32*3.5	76*4.5	133*12
32*4	76*5	133*13
32*4.5	76*6	133*14
32*5	76*7	133*16
34*3	76*8	133*18
34*4	76*9	159*6
34*4.5	76*10	159*6.5
34*5	89*4	159*7
34*6.5	89*4.5	159*8
38*3	89*5	159*8.5
38*3.5	89*5.5	159*10
38*4	89*6	159*12
38*4.5	89*7	159*14
38*5	89*7.5	159*16
38*5.5	89*8	159*18
42*3	89*9	159*20
42*3.5	89*10	159*28
42*4	89*11	168*6

外径*厚度 Outer diameter * wall thickness	外径*厚度 Outer diameter * wall thickness	外径*厚度 Outer diameter * wall thickness
168*7	273*13	377*18
168*8	273*15	377*20
168*9.5	273*16	377*22
168*10	273*18	377*25
168*11	273*20	377*32
168*12	273*22	377*36
168*14	273*25	377*40
168*15	273*28	377*45
168*16	273*30	377*50
168*18	273*32	406*9.5
168*20	273*35	406*11
168*22	273*36	406*13
168*25	273*40	406*17
180*10	273*45	406*32
194*10	298.5*36	406*36
194*12	325*8	406*40
194*14	325*9	406*55
194*16	325*10	406*45.0
194*18	325*11	406*45.5
194*20	325*12	406*60
194*26	325*13	426*12
219*6.5	325*14	426*13
219*7	325*15	426*14
219*8	325*16	426*17
219*9	325*17	426*20
219*10	325*18	426*22
219*12	325*20	426*30
219*13	325*22	426*36
219*14	325*23	426*40
219*16	325*25	426*50
219*18	325*28	457*9.5
219*20	325*30	457*14
219*22	325*32	457*16
219*24	325*36	457*19
219*25	325*40	457*24
219*26	325*45	457*65
219*28	356*9.5	508*13
219*30	356*12	508*16
219*32	356*15	508*20
219*35	356*19	508*22
219*38	356*28	558.8*14
273*7	356*36	530*13
273*8	377*9	530*20
273*9	377*10	570*12.5
273*9.5	377*12	610*13
273*10	377*14	610*18
273*11	377*15	610*78
273*12	377*16	624*14.2

产品规格

Product specification

钢号对照表/Steel grade comparison table



各国不锈钢牌号及密度对照表 Comparison table of stainless steel brand and density in various countries																	
No	中国GB		日本		美国		韩国		欧洲		印度		澳大利亚		中国台湾		密度
	旧牌号/Old brand	新牌号/New brand	JIS	ASTM	UNS	KS	BS EN	DIN17006/17400	IS	AS	CNS	AS	CNS				
奥氏体不锈钢																	
austenitic stainless steel																	
1	1Cr17Mn6Ni5N	12Cr17Mn6Ni5N	SUS201	201	S20100	STS201	1.4372				10Cr17Mn6Ni4N ²⁰	201-2	201	201	7.93		
2	1Cr18Mn8Ni5N	12Cr18Mn9Ni5N	SUS202	202	S20200	STS202	1.4373							202	7.93		
3	1Cr17Ni7	12Cr17Ni7	SUS301	301	S30100	STS301	1.4319				10Cr17Ni7		301	301	7.93		
4	1Cr18Ni9	12Cr18Ni9	SUS302	302	S30200	STS302	-							302	302	7.93	
5	Y1Cr18Ni9		SUS303	303	S30300	STS303	-							303	303	7.98	
6	Y1Cr18Ni9Se		SUS303Se	303Se	S30323	STS303Se	-								303Se	7.93	
7	0Cr19Ni9		SUS304	304	S30400	STS304	-						07Cr18Ni9	304	304	7.93	
8	0Cr18Ni9	06Cr19Ni10	SUS304	304	S30400	STS304	1.4301	X5CrNi18-10					07Cr18Ni9	304	304	7.93	
9	00Cr18Ni10		SUS304L	304L	S30403	STS304L	1.4306	X2CrNi189					02Cr18Ni11	304L	304L	7.93	
10	00Cr19Ni10	022Cr19Ni10	SUS304L	304L	S30403	STS304L	1.4306	X2CrNi19-11					02Cr18Ni11	304L	304L	7.93	
11	0Cr19Ni9N	06Cr19Ni10N	SUS304N1	304N	S30451	STS304N1	1.4315						304N1	304N1	7.93		
12	0Cr19Ni10NbN	06Cr19Ni9NbN	SUS304N2	XM21	S30452	STS304N2	-						304N2	304N2	7.93		
13	00Cr18Ni10N	022Cr19Ni10N	SUS304LN	304LN	S30453	STS304LN	-						304LN	304LN	7.93		
14	1Cr18Ni12	10Cr18Ni12	SUS305	305	S30500	STS305	1.4303						305	305	7.93		
15	1Cr18Ni12Ti			305												7.93	
16	0Cr23Ni13	06Cr23Ni13	SUS309S	309S	S30908	STS309S	1.4833						309S	309S	7.93		
17	1Cr20Ni14Si2		SUS309S	309S	S30908	STS309S	1.4833						309S	309S	7.93		
18	0Cr25Ni20	06Cr25Ni20	SUS310S	310S	S31008	STS310S	1.4845	x12CrNi25-21					310S	310S	7.93		
19	1Cr25Ni20Si2		SUS310S	310												7.93	
20	0Cr17Ni12Mo2	06Cr17Ni12Mo2	SUS316	316	S31600	STS316	1.4401	X5CrNiMo17-12-2			04Cr17Ni12Mo2	316	316	7.98			
21	0Cr18Ni12Mo3Ti	06Cr17Ni12Mo2Ti	SUS316Ti	316Ti	S31635	-	1.4571				04Cr17Ni12MoTi ²⁰	316Ti	316Ti	7.98			
22	0Cr18Ni12Mo2Ti			316Ti				X15CrNiSi25								7.98	
23	00Cr17Ni14Mo2	022Cr17Ni12Mo2	SUS316L	316L	S31603	STS316L	1.4404				-02Cr17Ni12Mo2	316L	316L	7.98			
24	0Cr17Ni12Mo2N	06Cr17Ni12Mo2N	SUS316N	316N	S31651	STS316N	-						316N	316N	7.98		
25	00Cr17Ni13Mo2N	022Cr17Ni13Mo2N	SUS316LN	316LN	S31653	STS316LN	1.4429						316LN	316LN	7.98		
26	0Cr18Ni12Mo2Cu2	06Cr18Ni12Mo2Cu2	SUS316J1	-	-	STS316J1	-						316J1	316J1	7.98		
27	00Cr18Ni14Mo2Cu2	022Cr18Ni14Mo2Cu2	SUS316J1L	-	-	STS316J1L	-						-	316J1L	7.98		
28	0Cr19Ni13Mo3	06Cr19Ni13Mo3	SUS317	317	S31700	STS317	-						317	317	7.98		
29	1Cr18Ni12Mo3Ti															7.9	
30	00Cr19Ni13Mo3	022Cr19Ni13Mo3	SUS317L	317L	S31703	STS317L	1.4438	X2CrNiMo18-16-4					317L	317L	7.98		
31	0Cr18Ni16Mo5		SUS317Ti	-	-	STS317Ti	-						317L	317L	7.98		
32	0Cr18Ni10Ti	06Cr18Ni11Ti	SUS321	321	S32100	STS321	1.4541	X6CrNiTi18-10			04Cr18Ni10Ti ²⁰	321	321	7.93			
33	1Cr18Ni9Ti		SUS321	321	S32100	STS321	-	X12CrNi18-9				321	321	7.85			
34	00Cr17Ni14Mo3															8	
35	0Cr18Ni9Cu3		SUSXM7	XM7	-	STSMX7	-							XM7	8		
36	0Cr18Ni3Si4		SUSXM15J1	XM15	S38100	STSMX15J1	-							XM15	7.75		
37	0Cr18Ni11Nb	06Cr18Ni11Nb	SUS347	347	S34700	STS347	1.455	X6CrNiNb18-10			04Cr18Ni10Nb ²⁰	347	347	7.98			
奥氏体-铁素体型不锈钢 (双相不锈钢) AUSTENITIC FERRITIC STAINLESS STEEL (duplex)																	
38	0Cr26Ni5Mo2	-	SUS329J1	329	S32900	STS329J1	1.4477						329J1	329J1	7.7		
39	1Cr18Ni15Si4AlTi															7.51	
40	00Cr18Ni5Mo3Si2	022Cr19Ni5Mo3Si2N	SUS329J3L	-	S31803	STS329J3L	1.4462						329J3L	329J3L	7.7		
铁素体型不锈钢 Ferritic stainless steel																	
41	0Cr13Al	06Cr13Al	SUS405	405	S40500	STS405	1.4002				04Cr13	405	405	7.75			
42	-	022Cr11Ti	SUH409	409	S40900	STS409	1.4512					409L	409L	7.75			
43	00Cr12	022Cr12	SUS410L	-	-	STS410L	-					410L	410L	7.75			
44	1Cr17	10Cr17	SUS430	430	S43000	STS430	1.4016				05Cr17	430	430	7.7			
45	Ycr17		SUS430F	430F	S43020	STS430F	-						430F	7.78			
46	1Cr17Mo	10Cr17Mo	SUS434	434	S43400	STS434	1.4113					434	434	7.7			
47	-	022Cr18NbTi	-	-	S43940	-	1.4509					439	439	7.7			
48	00Cr30Mo2		SUS447J1	-	-	STS447J1	-						447J1	7.64			
49	00Cr27Mo		USUSXM27	XM27	S44625	STSMX27	-						XM27	7.67			
50	00Cr18Mo2	019Cr19Mo2NbTi	SUS444	444	S44400	STS444	1.4521					444	444	7.75			
马氏体型不锈钢 Martensitic stainless																	
51	1Cr12	12Cr12	SUS403	403	S40300	STS403	-					403	403	7.8			
52	1Cr13	12Cr13	SUS410	410	S41000	STS410	1.4006				12Cr13	410	410	7.75			
53	2Cr13	20Cr13	SUS420J1	420	S42000	STS420J1	1.4021				20Cr13	420	420J1	7.75			
54	3Cr13	30Cr13	SUS420J2	-	-	STS420J2	1.4028				30 Cr13	420J2					

营销网络图

Marketing network



热诚欢迎国内外客户来我司洽谈

Warmly welcome customers from home and abroad to discuss with us
我们将以最好的服务和最具竞争力的价格为您提供最优质的产品
We will provide you with the best quality products with the best service and
the most competitive price